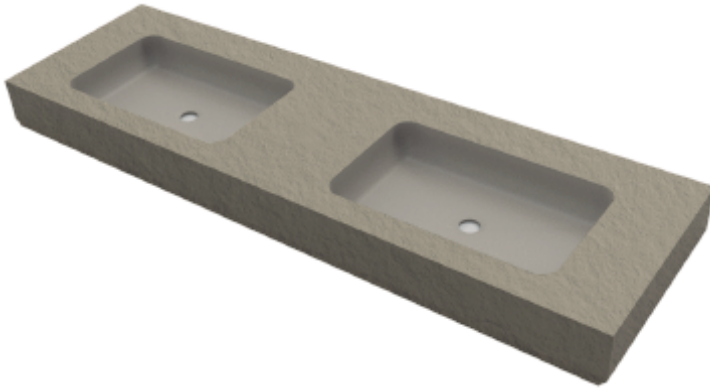


fiora

COD 010121.FT.005.02_EN

Fontana

MPC122



MATERIAL

Silexpol® (mix of polyurethane resins, silica and other minerals).

TEXTURE

Top and sides: Slate.
Basin interior: Smooth.

COLORS

In stock:



Total white 0P

Black 22T

On order:



Cappuccino 36T Cement 37T Off white 0T Bone 40T Silk grey 21M Grey 31T

INCLUDED

- Installation instructions and owner's manual.

NOT INCLUDED

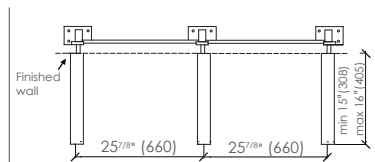
- Drain.
- P-trap.
- Bracket system.

FEATURES

- Nanobath: Bacteriostatic and fungistatic.
- Metalface: Extra coating to improve hardness and strength of washbasin finish.
- Washbasin without overflow.
- Faucet hole:
 - No hole.
 - One hole.
 - Three holes for 8" c/c.
 - Custom hole drilling available upon request.

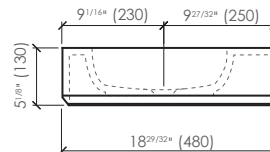
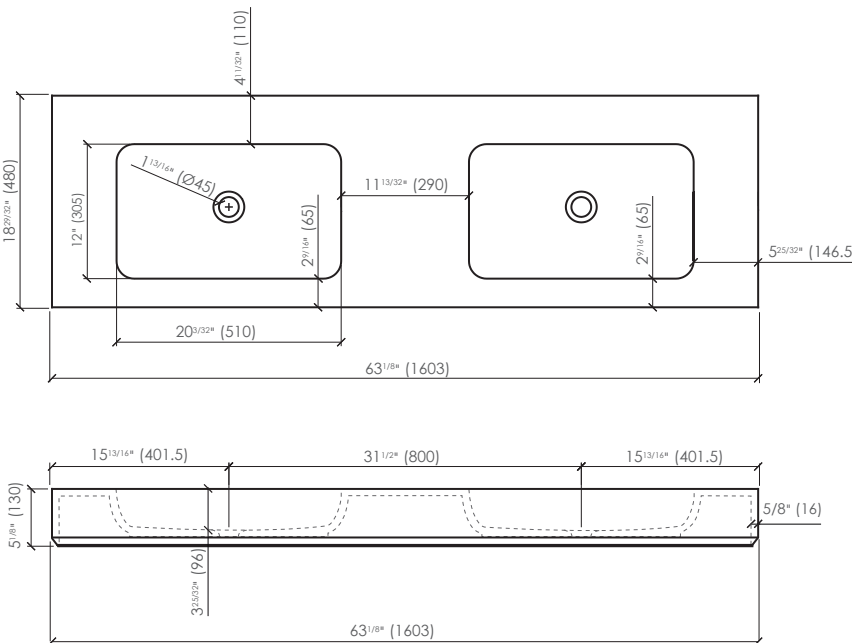
INSTALLATION

- For wall-mounted installation.
- Compatible with the following carriers:
 - ZURN Z 1236
 - JOSAM 17380
 - WATTS CA-401



DIMENSIONS AND WEIGHT

Length	63 ^{1/8} " (1603 mm)
Width	18 ^{29/32} " (480 mm)
Height	5 ^{1/8} " (130 mm)
Weight	84.4 lb (38.3 kg)



Approximate measurements. The manufacturer accepts 5 mm (0.2") variance.
Products and specifications shown are subject to change without notice.
Please contact AD Waters for any further inquiries, spare parts, etc.

Last revision 2020-03-23

www.fiora.us
Distributed in the United States
and Canada by AD Waters
Toll-free number: 1 888 239-9336